

Digital Imaging



Benefits of using phosphor plates include:

- Cost effective for larger surgeries
- Centralised scanner solutions
- User friendly- as easy to place in the mouth as conventional film
- Compact and neat
- No chemicals, film processor or dark room needed

Benefits of using sensors include:

- Instant capture of images within surgery
- Optimized diagnosis
- Crystal clear images
- Convenient, compact and comfortable
- Shared use, central location or chairside
- No dark room, developer, chemicals or mess
- Cost effective, simple and clean
- Lower radiation

Visit: www.soeidental.com

Why Choose Software of Excellence?

Choosing a digital imaging system that suits your practice can be a daunting experience.

Our Regional Business Managers (RBMs) are committed to recommending only the best and most appropriate brands of equipment, giving the best impartial advice in the industry. Our RBMs regularly receive extensive training on the leading digital imaging systems in the market today to provide a true consultation service for the increasing number of practices that are embracing this new technology.

EXAMINE^{PRO} provides seamless software integration, integrating directly into the chart screen of **EXACT** so you only have one software solution to learn.

To summarise the benefits of choosing Software of Excellence:

- **EXAMINE^{PRO}** provides seamless software integration
- All images regardless of source are integrated directly into the chart screen of **EXACT**
- One software solution to learn
- Single database for all images
- Unbiased advice from trained digital imaging consultants
- "One stop shop" for practice management and imaging software and digital imaging hardware
- Dedicated Digital Imaging support team



"Our decision to invest in **EXAMINE^{PRO}** was driven by a desire to simplify and speed up our procedures, but in reality it has done much more than that. Since its installation, the difference to the management of our patient data has been much more efficient.

The real benefit of **EXAMINE^{PRO}** is in its inherent flexibility. Once the x-ray has been taken, **EXAMINE^{PRO}** automatically stores the digital image in the appropriate patient file, from here it can be stored, retrieved, manipulated, printed, copied, the list is endless, but you still keep the original image in its original format. **EXAMINE^{PRO}** has been such a revelation for our practice that I don't know how we ever worked without it!"

Julian Unter – Rainham Dental Surgery & Implant Centre

"I have a completely digital system for my panoramic and standard x-rays, these are from different manufacturers but they integrate with my **EXACT** software perfectly. This allows me to easily access x-rays and clinical data at the chairside, which lets me explain often complex treatments to my patients very easily. This explanation aids their understanding and helps them make informed decisions."

Russell Tant – The Hertfordshire Centre for Dentistry, Harpenden

How can EXAMINE^{PRO} help you?

• It's a Single Solution

EXAMINE^{PRO} keeps each individual patient's images together and makes them accessible from one place, regardless of what imaging hardware was used to create the original. There's no need for separate software and systems to access a variety of patient images – with **EXAMINE^{PRO}** you can see which images are available from the patient's file and access them with just a click of the mouse.

• Simple Chart Integration

With **EXAMINE^{PRO}** you can view and access digital images directly from the patient's tooth chart. There is also a colour function which shows the age of these images enabling you to understand when you need to retake them. If an image exists for the patient's tooth it appears below the chart in a "thumbnail" view, allowing you to access the information immediately. Hovering over the image with your mouse displays data such as image type, date taken, tooth notations and the size of the file. Double click on the image and it immediately expands to full size allowing you to view in detail and manipulate as required. The integration between **EXACT**, the **EXAMINE^{PRO}** module and your digital imaging hardware means that new images are automatically added when they are taken ensuring you always have the latest information at hand.

• Produces Treatment Plans

EXAMINE^{PRO} organises all your patient images in one place. Using an image picker you can import pictures and digital images into a patient's treatment plan, presentation, or even attach these images to an email. Images are listed from most recent to the oldest, with additional data such as date, type, tooth and up to three lines of notes included. Preparing and presenting patient data has never been easier and can be achieved in a matter of seconds.



• Offers Advanced Tools

EXAMINE^{PRO} can dramatically improve the image quality from your existing device using adaptive image processing techniques to increase local contrast. This is done by normalising (bringing nearer the centre of the grey scale) overly bright or dark areas so that the image is brought into the spectrum where the human eye works best, allowing more detail to be seen. Other tools include:

- On screen images and the ability to display multiple images side by side
- A full range of printing options
- Ability to email
- Tools to support endodontics

• Allows Freedom of Choice

Select the right digital imaging solution for your practice. **EXAMINE^{PRO}** seamlessly integrates with a wide variety of camera and x-ray solutions ensuring you are not locked in to a single technology supplier. Our DICOM standard application means that whatever hardware you buy – your images will be fully integrated with your **EXACT** practice management system.

• Industry Standard Formats

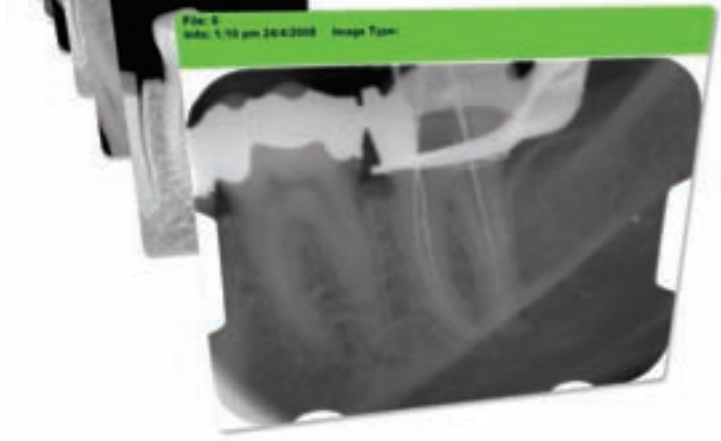
EXAMINE^{PRO} has been designed to incorporate a wide range of standards and formats including:

- DICOM III Medical format for image storage
- 12 bit data-full radiographic images for more accurate diagnostics
- 32 bit platform
- Real time processing
- Accepts all formats (DICOM III, BMP, JPG, TIF, Photoshop, PCX)
- Compatible with all Windows Operating Systems
- TWAIN, USB, and SCSI standard for scanners
- Internet and all email clients compatible
- SCSI, Firmware, and USB Compatible
- Makes Images Available

Call: 0845 3455767

Integration to EXACT and support

As digital imaging becomes the norm, we have developed EXACT software to improve the access and visibility of images directly within the practice management software; rather than simply providing a link to other packages. EXAMINE^{PRO} has been developed to provide



complete integration of all digital images closely into the patient chart screen in EXACT ensuring that all images, regardless of which digital systems they originated from, can be viewed directly. EXAMINE^{PRO} integrates most leading brands of Digital X-Ray and Intra-Oral camera pictures directly into the EXACT chart screen. Images are viewed as thumbnails and can be enlarged, enhanced and manipulated without having to go into other software packages. Using the Rolodex feature, it is also easy to scroll through all images related to the current patient and to select images of relevance to the current treatment plan for further manipulation. The dentist can also see instantly with our unique chart graphic whether there are any images stored for a tooth, how old the images are, and access them with one click.

Support Services

When you choose Digital Imaging and EXAMINE^{PRO} from Software of Excellence you open the door to a wealth of practice management and digital imaging expertise. We have a dedicated Digital imaging team who will work with you every step of the way, offering you advice and training to get the most from your solution today and into the future.

Our UK based DI support team provides industry leading service to over 4500 practices. We understand that your time is valuable so it is important that your queries are answered promptly and knowledgeably. For this reason our highly trained team includes not only technical support staff but also highly experienced dental assistants who understand the challenges of a modern dental practice.



Key statistics:

All support calls are answered by a qualified support technician – not an answering machine

Over 80% of support calls are resolved during the first phone call

Over 90% of support calls are resolved within 24 hours

Over 98% of support calls are resolved within 1 week

Call: 0845 3455767

Leading the field in digital imaging



Satelec[®] Digora Optime Plate System



VistaScan Combi Plus



VistaScan Mini



Sirona[®] XIOS Intraoral Sensor System

Software of Excellence are one of the UK's largest suppliers of digital imaging solutions.

Working with some of the world's leading dental companies, Software of Excellence are uniquely placed to offer unrivalled advice and guidance on the most suitable equipment to meet your digital imaging needs.

From supply, installation and support right through to seamless integration with their EXACT[™] practice management system, Software of Excellence are rightly regarded as the leading digital imaging partner for forward thinking dental practices nationwide.

For more information or to arrange a demonstration call Software of Excellence on 0800 328 6227.

Transforms your practice into a business

Call: 0800 328 6227 Visit: www.soeidental.com

Software of Excellence, Eclipse House, Eclipse Park, Sittingbourne Road, Maidstone, Kent, ME14 3EN.

SOFTWARE OF EXCELLENCE

A HENRY SCHEIN[®] COMPANY

Digital Imaging



SOFTWARE OF EXCELLENCE
A HENRY SCHEIN[®] COMPANY

TRANSFORMS YOUR PRACTICE INTO A BUSINESS